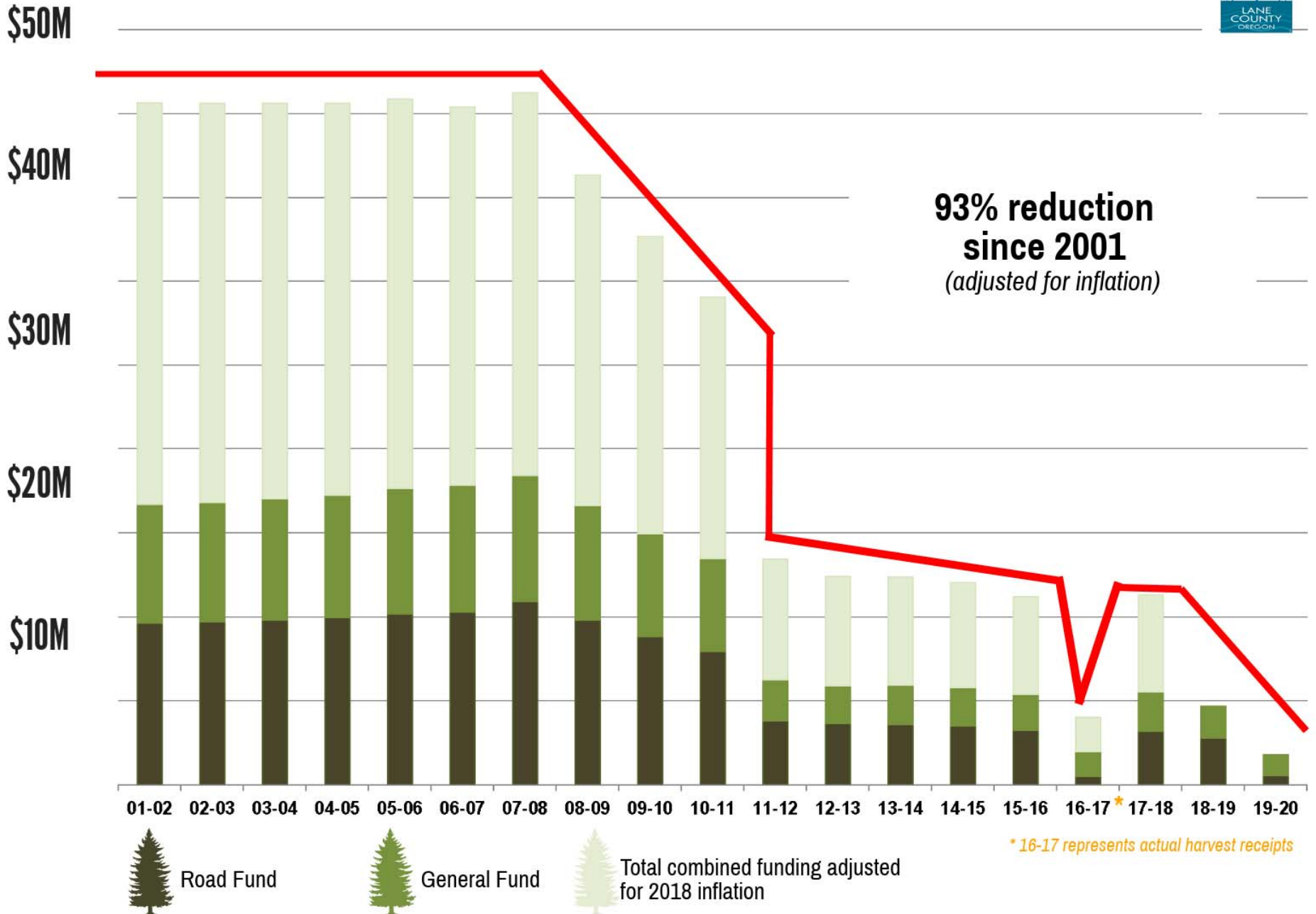


FY 21-22 BUDGET MESSAGE



Steve Mokrohisky,
County Administrator

Lane County Secure Rural Schools History



Where Your Property Tax Dollar Goes



county

47¢

school districts

32¢

cities

6¢

*libraries, parks,
water districts, etc.*

4¢

*fire
districts*

▶ Lane County's General Fund receives approximately 11¢ of every property tax dollar paid.

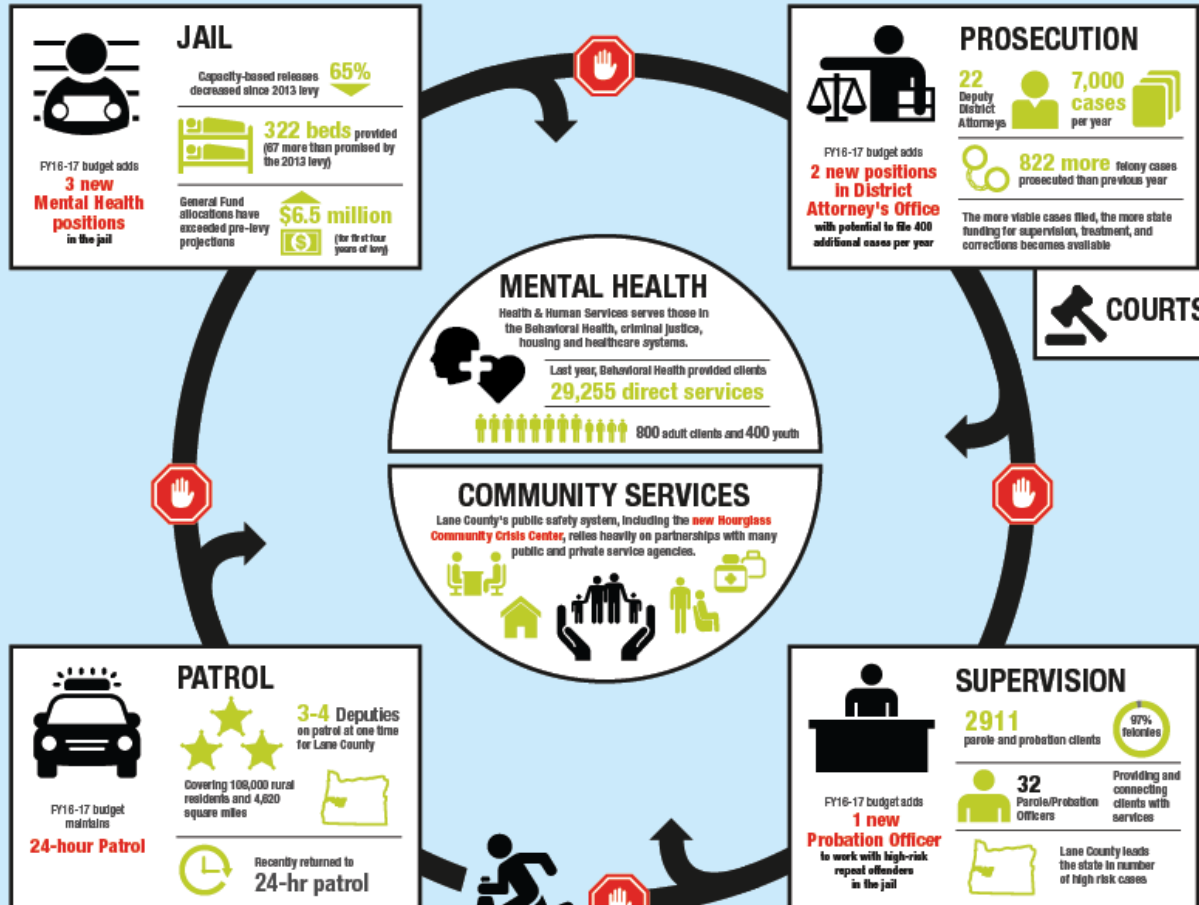
▶ Lane County has the seventh lowest permanent tax rate of Oregon's 36 counties.



Updated October 2018

Lane County Public Safety System

Creating a safer and healthier community through partnership and support.



Stop the cycle.

